

Core Principles

The *Early Childhood Colorado Framework* is based on and guided by these principles:

- Whole child and family centered
- Prenatal through age eight
- Strengths based
- Culturally relevant and responsive
- Outcomes focused
- Informed by evidence based and promising practices
- Cross-sector collaboration

Early Childhood Colorado Framework

A SHARED VISION

This *Framework* is a shared vision for Colorado's young children and their families. It guides planning and mobilizes action to ensure all children are valued, healthy and thriving. The *Framework* is embraced by the Early Childhood Leadership Commission, foundations, state agencies, nonprofits and early childhood stakeholders across Colorado.

For more information visit earlychildhoodframework.org

ADOPTED JULY 2008 | UPDATED JULY 2015

Strategies for Action

- Connect and Empower Families
- Build Community Capacity
- Implement Quality Standards
- Make Data Informed Decisions
- Develop and Retain the Workforce
- Support Consumer Affordability
- Advance Sustainable Business Practices
- Encourage Public Private Approaches
- Pursue Continuous Quality Improvement
- Ensure Coordinated Services
- Promote and Share Knowledge

Fundamentals

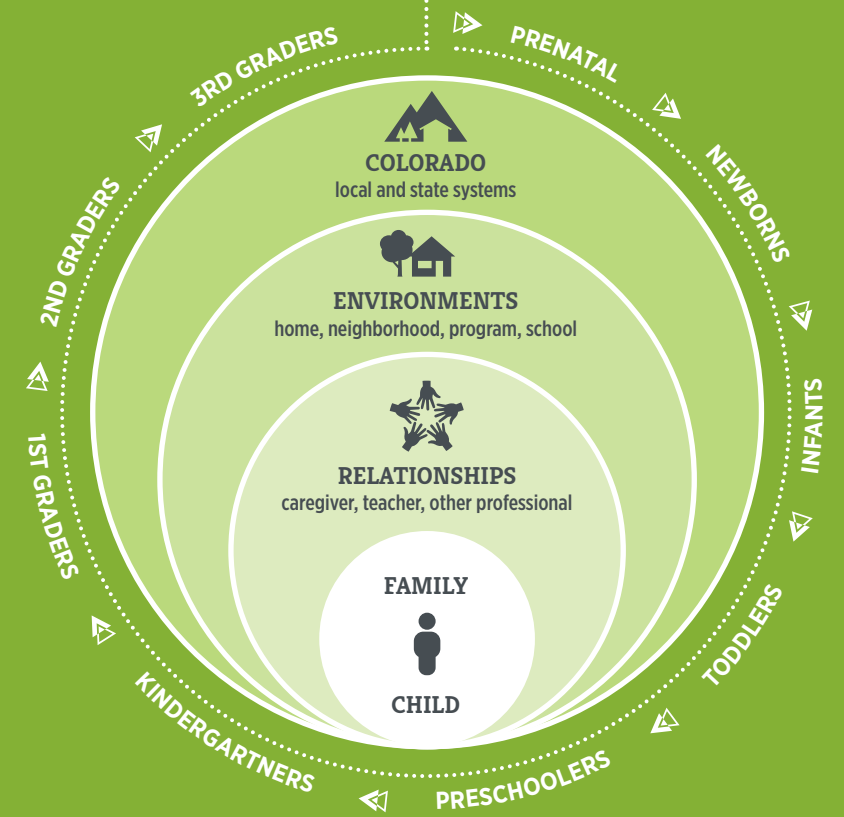
- Strong Partnerships
- Sufficient Investments
- Sound Policy
- Robust Public Engagement
- Shared Accountability
- Effective Leadership
- Relevant Education Opportunities

Outcomes ► access, quality and equity

- Family Support & Education
- Health & Well-Being
- Learning & Development

ACCESS	
	<ul style="list-style-type: none"> Family engagement and leadership opportunities exist within programs, schools and communities Services and supports promote the well-being and resiliency of parents and caregivers Family friendly policies and practices exist in the workplace
	<ul style="list-style-type: none"> Comprehensive health coverage and services are consistently utilized by pregnant women and children Integrated and preventive maternal and child physical, behavioral and oral health services are available All settings promote mental health and well-being through early identification, consultation and treatment
	<ul style="list-style-type: none"> Education, coaching and ongoing training exist for caregivers, teachers and other professionals Learning experiences and environments are high quality, developmentally appropriate and affordable
QUALITY	
	<ul style="list-style-type: none"> Family knowledge and capacity support children's healthy development and learning Families advocate for high quality comprehensive services and supports that lead to future success
	<ul style="list-style-type: none"> All health care providers, including mental health, deliver coordinated, family focused care Settings and practices promote strong relationships, social and emotional development, appropriate nutrition and physical activity
	<ul style="list-style-type: none"> Formal and informal care environments and education practices reach the highest levels of quality Adults understand and support children's learning and development, including social and emotional All settings provide effective transitions across and within programs, schools and systems
EQUITY	
	<ul style="list-style-type: none"> Education, employment, housing, financial and legal supports contribute to family economic security Families, including those with high needs, experience timely and coordinated services and supports
	<ul style="list-style-type: none"> Families have the ability to plan the number and timing of their children All environments are safe, free of toxins, have affordable foods and offer physical activity Children with special health, behavioral or developmental needs receive individualized services and supports
	<ul style="list-style-type: none"> All children are ready for school and achieving by 3rd grade regardless of ability, race, place, income, language and culture Children, including those with high needs, receive timely, comprehensive and affordable academic services and transition supports

all children are valued, healthy and thriving



Results

- CHILD**
Young children reach their developmental potential and are ready to succeed in school and in life
- ENVIRONMENTS**
Environments that impact children are safe, stable and supportive
- RELATIONSHIPS**
Adults are knowledgeable, responsive and interact effectively with and on behalf of children
- COLORADO**
Localities and the state attain economic and social benefits by prioritizing children and families