



2021- 2022 Annual Report

Content

- **Staff and Executive Committee**
- **Annual Report & Review**
- **Vision, Mission, & Strategic Plan**

Meet the Team



From Left to Right; Daisy Thomson, Carlee Raffensperger, Stephanie Bivins, Judy Segrest, Michelle Reeves



"This is an opportune time to grow early childhood in Mesa County and we are thrilled to be working with several partners to increase availability and quality. "

| Director - Stephanie Bivins, MEd

PCF Executive Committee



Sheryl Fisher
Chair

Chelsie Hess

Kim Self

Colleen Roahrig

Kristie Donathan

Cydney Clink

Melissa Scheirland



Jennifer Cutts
Vice Chair

Karen Martsolf

Stephanie Bivins

Annual Report

In its 23rd year of existence, Mesa County's early childhood council, the Partnership for Children and Families (PCF), **spent 2021-2022 focused on improving quality through increasing resources and expanding partnerships within the early childhood community.** As this focus emerged, Mesa County Public Health (MCPH) became the fiscal agent for PCF, merging efforts of the council and the county-wide initiative, Child Care 8,000 (CC8K) to **unify and enhance work.** To further support these efforts a robust team was built to serve the growing needs of an expanding community, deploy the increased state resources, and prepare for the implementation of Universal Pre-Kindergarten (UPK) in Colorado.

During the last year, PCF worked diligently to effectively and efficiently support the early childhood field, increasing Early Childhood Education (ECE) provider grant access, stimulating workforce development and scholarship funds, as well as increasing overall quality and capacity of child care in Mesa County.

PCF services expanded to reach a greater population of our ECE providers, **more than doubling access to quality coaching and environmental improvement funds to increase quality of care for children.** With new state grant opportunities, dollars reached an **all-time high of over \$500,000 funneling directly to ECE providers.** Staff worked with 49 of our 130 licensed ECE providers to access these grants, releasing additional dollars for new and established facilities to increase slot availability. As additional funding opportunities advanced, PCF worked to assist providers in accessing further funds.

ECE workforce is critical to addressing the lack of availability of our child care slots. In light of the current workforce shortage and need for expansions, **PCF continued career pipeline developments and added scholarship opportunities with community partners.** With the Child Development Associate (CDA), Expanding Quality in Infant and Toddler

Care (EQIT), and CPR and First Aid scholarship cohorts in place, **PCF added college course opportunities to continue education for current teachers in any stage of their educational career.** PCF partnered with the Mesa County Workforce Center to provide a Director Certification to increase opportunity to increase Director availability. Keeping ears to the ground, we also hosted a Pyramid training for 74 ECE professionals to support the social emotional development of young children. The high demand for the training inspired staff to become certified to provide Pyramid training and coaching regularly in the community, allowing for additional college credit opportunities.

Stakeholder feedback was collected from a variety of community members to **develop a comprehensive strategic plan moving forward.** Among many requests, a need for a stronger Family Childcare Home (FCH) and Friend Family and Neighbor (FFN) support system, and increased child care access and availability was expressed. With new legislation passing for a Department of Early Childhood along with UPK, PCF worked diligently to collect information and inform the community of developments. **Beginning in 2023, all Colorado children can access 10 free hours per week of voluntary, high-quality preschool the year before kindergarten.** The universal system will provide options to accommodate diverse family needs, increase access, and quality with all licensed providers able to access funds to support their families. With a community request for PCF to serve as an ECE hub, **PCF is dedicated to supporting Mesa County's implementation of UPK.**

Stakeholder feedback also indicated **an immense need for families to efficiently find available care,** as we are considered a child care desert. PCF sponsored and implemented the child care data system, Bridgecare, that launched in June to assist families in finding care and showcase our local ECE providers.

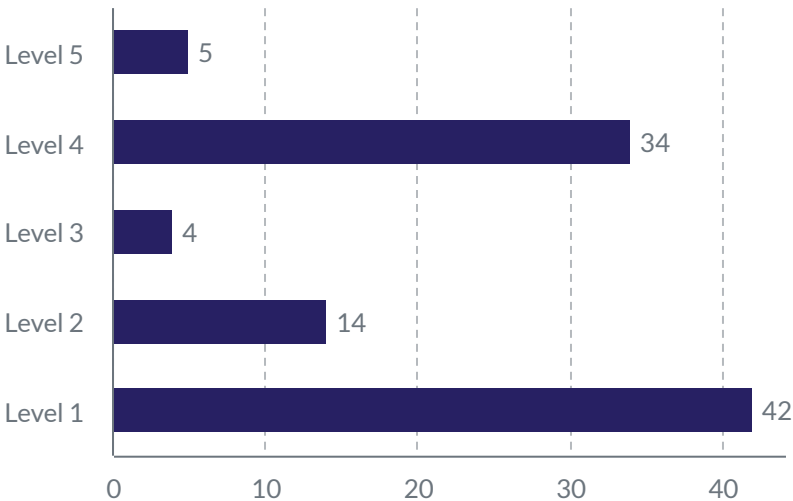
Annual Report

Working to address our community-wide goals to increase capacity, availability, and quality of care for all children in Mesa County, **PCF understands that community partners are vital to success.** PCF hosts bi-monthly community meetings to regularly connect the early childhood community and over the past year, **the Steering Committee expanded membership by over 70%** and hope to continue to reach and connect with further partners.

The goal of PCF is to strengthen the ECE sector in support of our childrens' learning, as early learning is pivotal to healthy human development and school readiness and access to quality care is vital for our working families. To this end, we are working with several partners to continue workforce development and assist local provider expansion efforts. **This includes creating an ECE training center for staff development with observation rooms and a high quality early childhood facility in Clifton.** We continue work to support current providers, engage new providers, and reach all who provide care to our young children. Children and families are at the heart of our work and we are dedicated to our community.

2022 Quality Ratings

COLORADO SHINES RATING
A Colorado Shines rating is a symbol of quality in early learning programs.



NUMBER OF ELIGIBLE, LICENSED PROVIDERS

The number of Level One ratings is due to an increase in opening new facilities. It takes over a year to establish a rating. Established facilities have had gaps in formal quality reviews due to COVID-19. PCF continues to work with providers on scholarships and increasing quality improvements.

2022 By the Numbers



224 early childhood scholarships issued.

72% increase in Steering Committee membership.

581 children experience increased quality of care.

127 new licensed childcare slots.

1,384 children benefit from quality improvements and coaching.

\$518,189 quality dollars released directly to providers.

Vision & Mission

Mission Statement

Create, coordinate, and sustain a resource-rich, inclusive community so that children can reach their full potential in safe and optimally nurturing environments.

Vision Statement

Helping families reach their full potential.

2022-2025 Strategic Plan

PCF hosted an Early Childhood Stakeholders meeting in early Spring, bringing a variety of community members and perspectives that led to a data informed and unified early childhood vision to guide the next phases of PCF.

SCAN ME FOR
FULL
STRATEGIC
PLAN

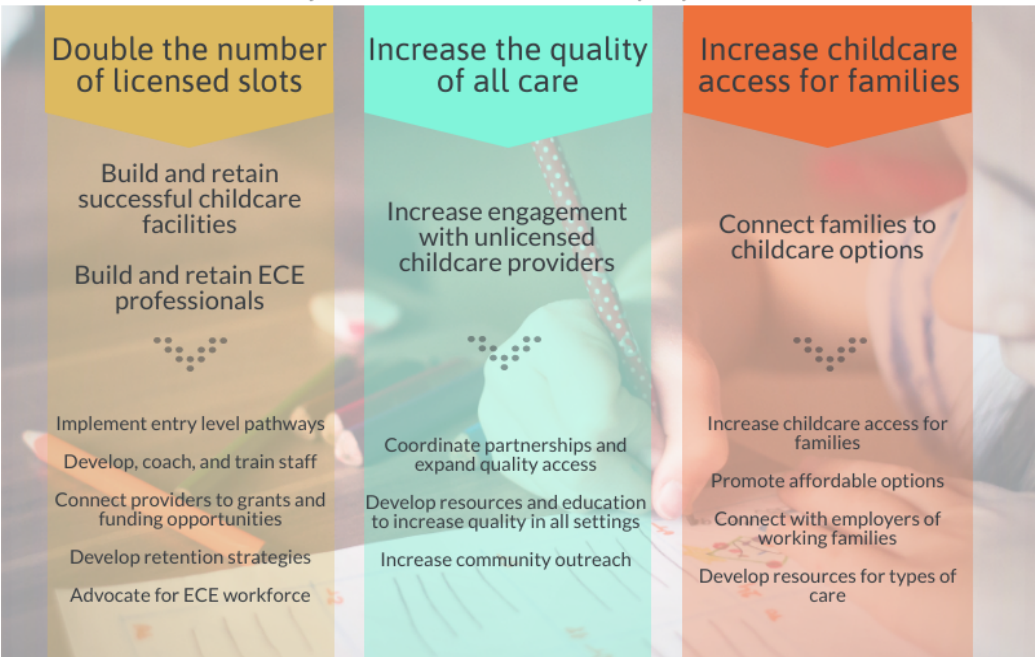


Charge of the Council



Strategic Priorities

Quality care for our child population





Mesa County

PARTNERSHIP
for Children & Families

